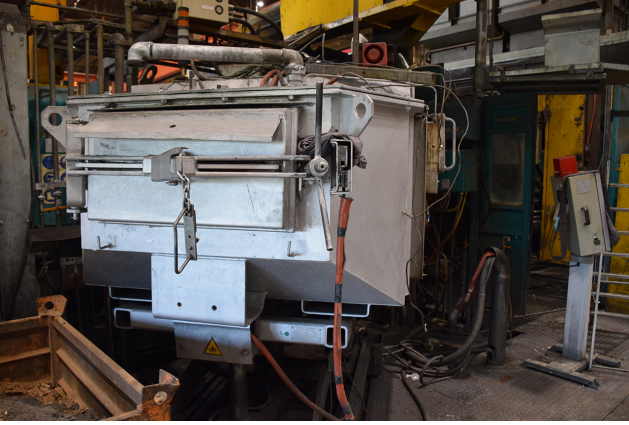


## StrikoWestofen W 1200 SL ProDos DPC Dozajlama Fırını O1814, kullanılmış



**manufacturer :**  
Striko Westofen

**Product number:**  
O1814

### Description

|               |                           |
|---------------|---------------------------|
| Fırın         | Dozajlama fırını          |
| Üretici firma | StrikoWestofen            |
| Model         | W 1200 SL ProDos DPC      |
| Üretim yılı   | 2001                      |
| Yorum         | alüminyum alaşımları için |

#### Teknik veriler

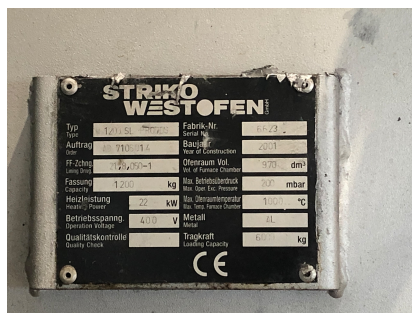
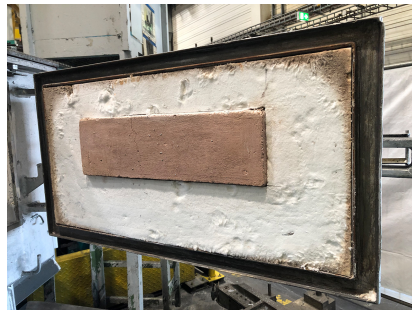
Kontrol sistemi ProDos

### Teknik veriler

|                     |          |
|---------------------|----------|
| Isıtma              | Elektrik |
| Kapasite            | 1200 kg  |
| Çalışma kapasitesi  | 900 kg   |
| bağlantı kapasitesi | 22 kW    |
| güç                 | 27,5 kW  |

Teslimat süresi hemen

Fiyat istek üzerine



| STRIKO WESTOFEN                                  |                     |
|--|---------------------|
| Typ  | 1200 SL 7002        |
| Auftrag  | 910-11              |
| FF-Zeit  | 20-25-1             |
| Faktor   | 1200                |
| Heizleistung<br>Heat / Power                     | 22 kW               |
| Betriebsspannung<br>Operating Voltage            | 400 V               |
| Qualitätskontrolle<br>Quality Check              |                     |
| Fabrik-Nr.<br>Serial No.                         | 8023                |
| Baujahr<br>Year of Construction                  | 2010                |
| Oberraum Vol.<br>Net of useful Chamber           | 970 dm <sup>3</sup> |
| Max. Betriebsdruck<br>Max. Oper. Etc. Pressure   | 22 mbar             |
| Max. Oberflächentemp.<br>Max. Sur. Panel Chamber | 1100 °C             |
| Metall<br>Metal                                  | 3L                  |
| Tragkraft<br>Load Capacity                       | 800 kg              |